

## ZIMMER + ROHDE

### ACOUSTIC PERFORMANCE REPORT

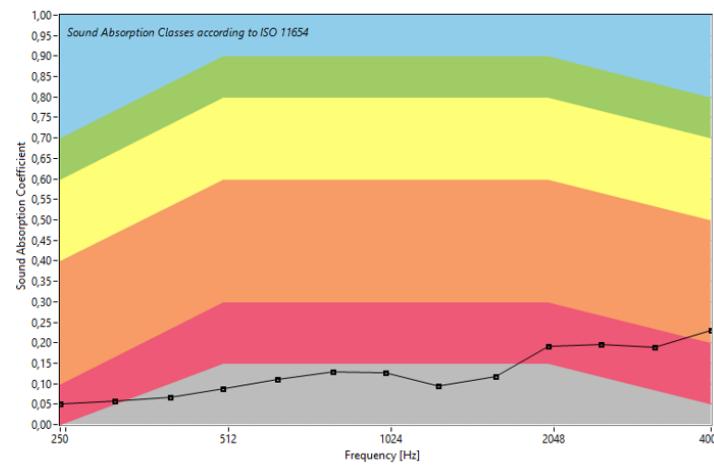
#### TEST INFORMATION

Test Method: Impedance tube correlation method

Air Gap: 12 cm

#### ACOUSTIC PERFORMANCE TABLE

Design Name	ISO 11654 Weighted Sound Absorption Coefficient ( $\alpha_w$ )	ISO 11654 Class	ASTM C423 Sound Absorption Average (SAA)	ASTM C423 Noise Reduction Coefficient (NRC)
LECILE	0,15	Class E	0,11	0,10



#### TECHNICAL NOTE

You can find the sound absorption coefficient values of your fabric at specific frequencies from the measurement chart we sent you.

**ISO 11654 classification is based on the  $\alpha_w$  value.**

**SAA value is the average of 200–2500 Hz.**

**NRC value is the average of 250, 500, 1000 and 2000 Hz.**

**Final performance may vary depending on application details.**

The values presented in this report (Weighted Sound Absorption Coefficient  $\alpha_w$ , Class rating according to ISO 11654, Sound Absorption Average – SAA, and Noise Reduction Coefficient – NRC according to ASTM C423) are based on impedance tube measurements.

According to ISO 11654 and ASTM C423, these parameters should be derived from measurements performed in a reverberation chamber in accordance with ISO 354.

The results shown here are intended only for reference and estimation purposes and should not be used in official reports or as ISO 354-compliant certified results.



Zimmer & Rohde  
Zimmersmühlenweg 14-16  
61440 Oberursel  
Germany